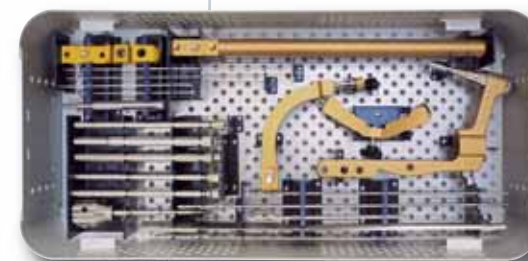




HUMERAL NAILING SYSTEM

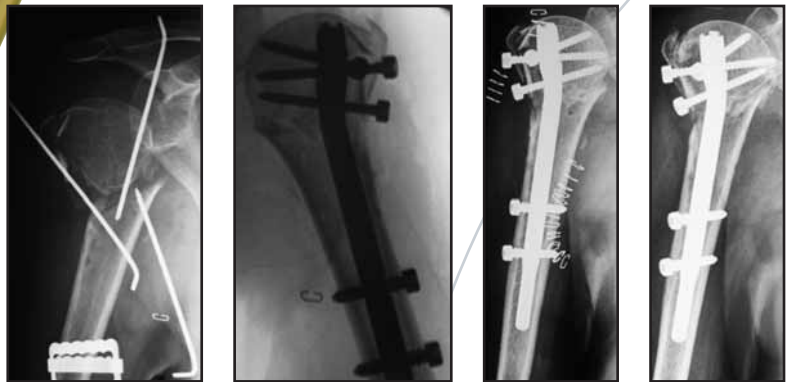
- One design for left or right humerus
- Proximal bend 15°
- Proximal Humeral Nail: Short (150 mm) and Long (185-320 mm, in 15 mm increments). Antegrade insertion only
- Diaphyseal Humeral Nail: antegrade and retrograde insertion
- Mechanical targeting for complete guided locking of the screws at the tip of the nail
- Titanium nails & screws

Centronail Humeral Complete Instruments Box
(includes also general instruments required)



PROXIMAL HUMERAL APPLICATION*

• 74-Year-Old Female • Referred from other centre after 1 month



Pre-operative Post-operative 3 weeks FU 12 weeks FU

* Case studies provided by Mario Manca, MD, Viareggio, Lucca, Italy

HUMERAL DIAPHYSEAL APPLICATION ANTEGRADE*

• 30-Year-Old Female



Pre-operative Post-operative 4 weeks FU 12 weeks FU

HUMERAL DIAPHYSEAL APPLICATION RETROGRADE**

• 46-Year-Old Male



Pre-operative Post-operative Post-operative 40 days FU 40 days FU

** Case study provided by Rinaldo Giancola, MD, Milan, Italy

