

A STRAIGHT ANSWER for kids.



No Casting

No Physical Therapy

No or Reduced Osteotomy



The Guided Growth Technique with the eight-Plate corrects axial deformities in the upper and lower limb with a minimally invasive approach. The extra-periosteal eight-Plate acts as a tension band and does not violate the physis or inhibit its growth. Use of the eight-Plate can avoid osteotomy and overcomes the drawbacks associated with traditional implants.



Guided Growth Technique With The eight-Plate Corrects Deformities Without Osteotomies



Indications

The Guided Growth Technique with the eight-Plate is indicated for any growing child or adolescent (age range 18 months to 17 years) with any angular deformity, regardless of etiology.

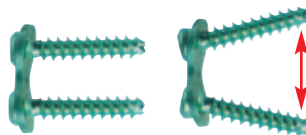
Benefits to Surgeons

- Simple, minimally invasive technique
- Learning curve = 1 to 2 cases
- Addresses multiple / complex deformities simultaneously
- Modular correction - repeat as indicated



Benefits to Patients

- Outpatient procedure - minimal impact on school / work schedule
- Reduced surgical pain / risks
- Immediate mobilization / rehabilitation
- Flexible implant will tether (not compress) the physis, allowing more rapid correction



Diverging screws function like a hinge to avoid physis compression.

Review Of Cases*

Dr. Peter Stevens, University of Utah School of Medicine

Cases were performed as part of an IRB Approved Study with implantation between 4/04 and 4/05.

Purpose

- Determine if hemi-epiphysiodeses using a plate is safe, reliable, and reversible
- Determine the age criteria
- Determine for which diagnoses this method is applicable

Patient Demographics

- N = 34 patients with genu varum / valgum
- N = 65 segmental deformities
- Age 19 mos. to 17 years
- Weight 14 kg. to 150 kg.
- Duration plate(s) = 6 to 18 mos

Diagnosis	Patients	Deformities
Idiopathic	20	43
Skeletal dysplasia	2	8
Blount's	4	4
Limb deficiency	3	5
Trauma	3	2
Rickets	1	2
Other	1	1

Deformity Correction

- Full correction 32/34 patients – plate(s) removed @ average of 11 months
- Pending correction 2/34 patients – awaiting further correction /c growth
- Anticipated osteotomies 1/34 (1 patient with adolescent Blount's disease)
- "Rebound" repeat plating will depend upon further growth / follow-up

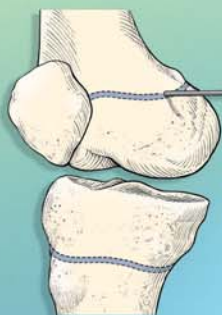
Study Conclusions

- Hemi-epiphysiodeses with a plate is safe, reliable, and reversible
- Permits deformity correction at or near the CORA(s)
- Directional control may be frontal, saggital, or oblique
- Addresses multi-focal and bilateral deformities simultaneously
- Is applicable for any age group and any diagnosis
- The extraphyseal eight-plate = tension band
- These patients might otherwise have had 64 osteotomies

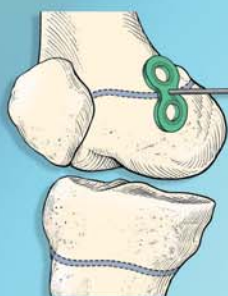
The safety, comfort and cost / benefit ratio clearly favor the eight-Plate.

* Data on file at the University of Utah

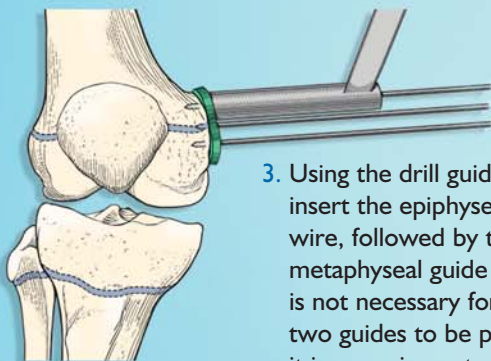
Operative Brief



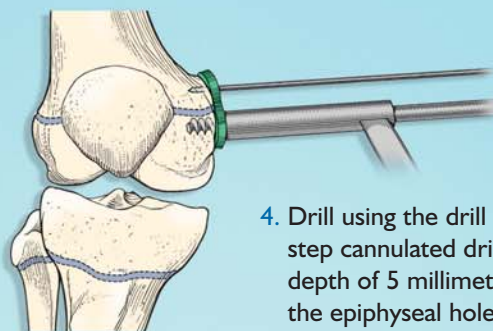
1. Insert localizing pin in physis and verify position with fluoroscope.



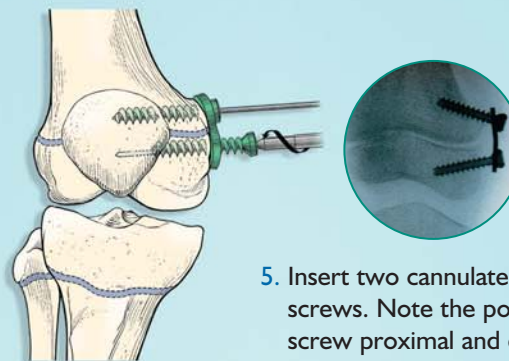
2. Apply contoured eight-Plate over pin.



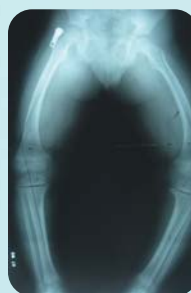
3. Using the drill guide, first insert the epiphyseal guide wire, followed by the metaphyseal guide wire. It is not necessary for these two guides to be parallel; it is more important to avoid the physis. Remove the center guide wire.



4. Drill using the drill guide and the step cannulated drill bit to a depth of 5 millimeters. First drill the epiphyseal hole, followed by the metaphyseal.



5. Insert two cannulated self tapping screws. Note the position of the screw proximal and distal to the physis. Screws do not need to be parallel. Remove the guide wires.



Preoperative



One year postoperative: leg straight, then right femoral plate removed

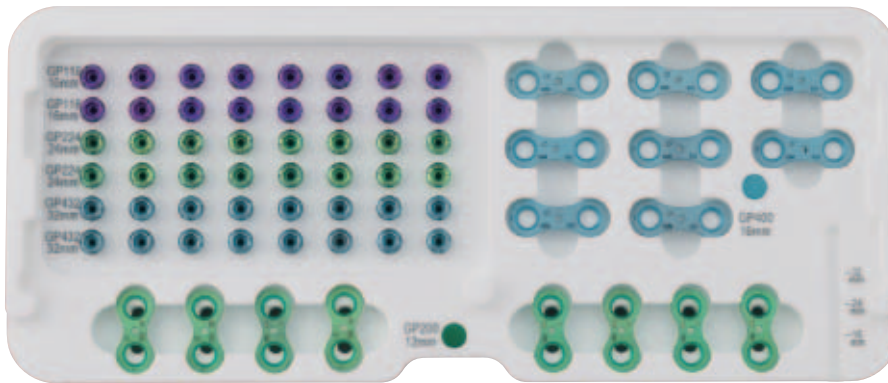


Two years postoperative: leg straight, then left femoral plate removed

Screw Tray Caddy

Color Coded Screws

Purple= 16 mm, Green= 24 mm, Blue = 32 mm



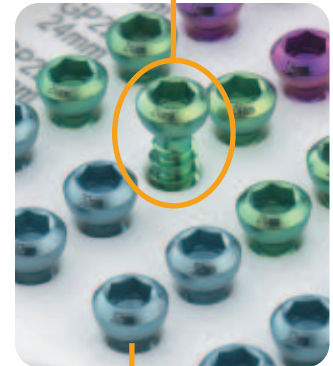
Color coded plates

Green = 12 mm plate

Blue = 16 mm plate

Measurement guide

No misplaced screws - all screws have dedicated holes with matching depth



Slightly elevated seat for easy grasp

Ordering Information

INT.L. #	U.S. #	Description	Length
GP200CE	GP200	eight-Plate Guided Growth Plate	12 mm
GP400CE	GP400	eight-Plate Guided Growth Plate	16 mm
GP116CE	GP116	eight-Plate Guided Growth Screw	16 mm
GP224CE	GP224	eight-Plate Guided Growth Screw	24 mm
GP432CE	GP432	eight-Plate Guided Growth Screw	32 mm
GP520CE	GP520	Cannulated Drill Bit, 3.2mm Dia.	
GP510CE	GP510	Screwdriver, eight-Plate 3.5 mm cannulated	
GP530CE	GP530	Drill Guide	
GP540CE	GP540	K-Wire, 1.6 mm Dia.	
GP200KCE	GP200K	eight-Plate, Guided Growth Plate Kit, includes 12mm eight-Plate and 24 mm screws, non-sterile	
GP400KCE	GP400K	eight-Plate, Guided Growth Plate Kit, includes 16mm eight-Plate and 32 mm screws, non-sterile	
GP600CE	GP600	Steri-Tray Kit	
GP601CE	GP601	Empty Steri-Tray	



eight-plate.com

EP-0606(A)-PL-US © Orthofix Inc. 1/2007



ORTHOFIX
ALWAYS INNOVATING

For more information contact your local representative or call 1.800.BoneFix
www.orthofix.com