

# POSTERIOR Reduction For HIP And FEMUR Fractures



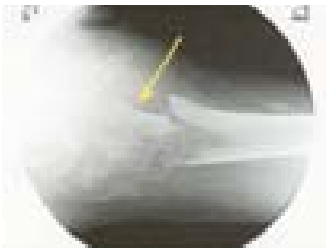
**PORD**  
POSTERIOR REDUCTION



- Simple, fast and accurate reduction of posterior fracture sagging
- Radiolucent support
- Maintains reduction during fracture fixation
- No obstruction of C-arm
- Compatible with most fracture tables

The PORD™ (Posterior Reduction) Device is placed under the patient's proximal femur during surgery and is used to correct posterior sagging of the fracture and maintain the reduction during fixation. Designed with a radiolucent ledge, the fracture site is supported and can be clearly visualized with the image intensifier.

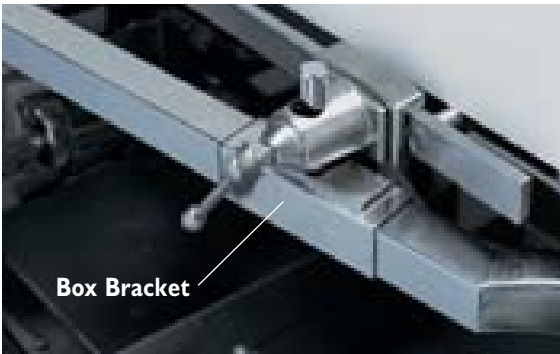
**Radiolucent Ledge** maintains the reduction during fixation, and allows AP visualization of the fracture.



**Posterior Sagging**



**Posterior Reduction**



Using the Box Bracket, the PORD device will adapt to most fracture tables. From an inferior approach, the vertical post of the box bracket slides into the Clark Attachment\* and is locked into place. The horizontal bar is placed through the Box Bracket with the curved portion toward the fracture table.



The Limb Support is positioned under the fracture area, posterior sagging is corrected and confirmed by AP and lateral imaging. Once the fracture is aligned, the Lug Screw is tightened, and the patient is prepped and draped for surgery.

<b>PORD</b> Posterior Reduction Device	ITEM #
Includes: Box Bracket, Horizontal Bar, Nut and Limb Support	<b>110000</b>

\* Clark Attachment not included