

Contours VPS™

Volar Plate System

Contours VPS, the new volar plate from Orthofix has a curved distal end, predicated by the variable surface geometry of the volar radius anatomy.

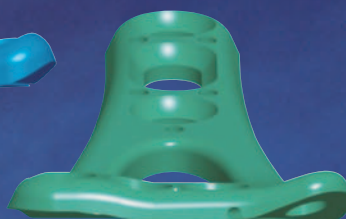
High and low contoured plates were precisely designed to fit the variable curves, based on open anatomical dissection and extensive cadaveric studies at the Hamann Todd Osteological Collection.

With Contours VPS, optimal screw placement is obtained without having to place the plate too far distally. The fixed angle locking screws allow maximum purchase in subchondral bone while minimizing tissue irritation.

- Greater range of screw sizes for stabilizing large and small fragments
- Microthreaded screws provide stability and minimize shattering of small fragments.
- Sophisticated, multiple-function instrumentation



High Contour



Low Contour

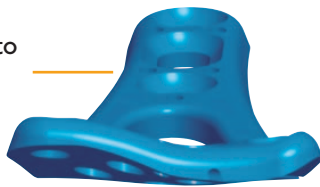
Designed from Anatomy



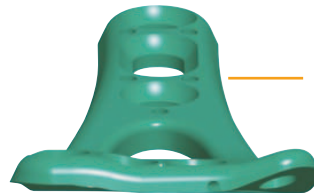
The Contours VPS is designed from open dissection and extensive cadaveric research at the Hamann Todd Osteologic Collection. The surface anatomy of the distal radius is not standard, most notably with variances in the prominence of the lunate facet. The high and low contours of the Contours VPS plate fit within those variances and provide optimal screw placement without having to place the plate too far distally.

With the anatomical alignment of the plate within the Pronator Quadratus fossa, the fixed angle screws obtain purchase in the dorsal subchondral bone without danger of protrusion. Contours VPS reduces the risk of improper plate and screw placement, and provides successful, reproducible outcomes.

High contour plate designed to align with greater protrusions of the lunate facet



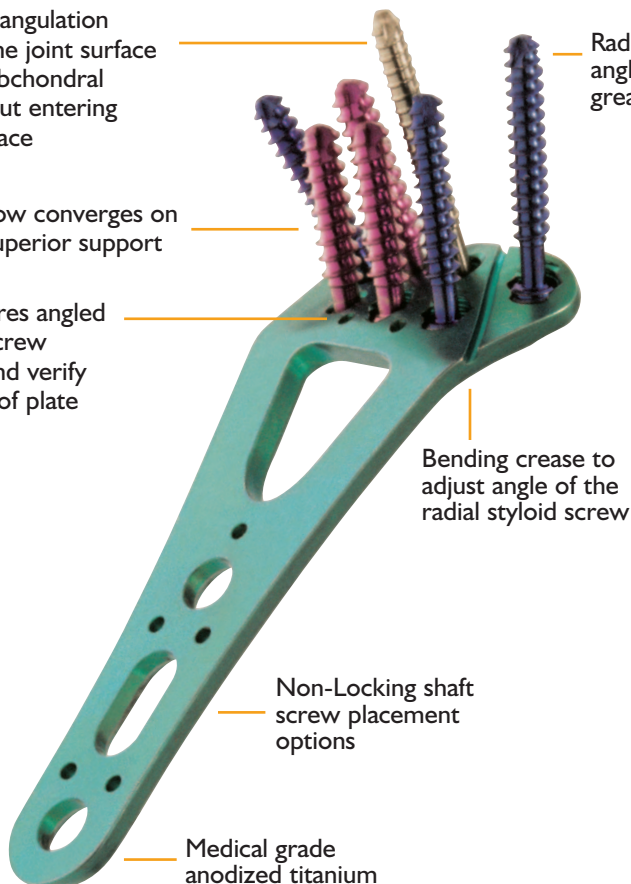
Low contour plate for patients with lesser curvature along the Pronator Quadratus line



Distal row follows a downward angulation similar to the joint surface to reach subchondral bone without entering the joint space

Proximal row converges on distal for superior support

Distal K-wires angled to match screw direction and verify placement of plate

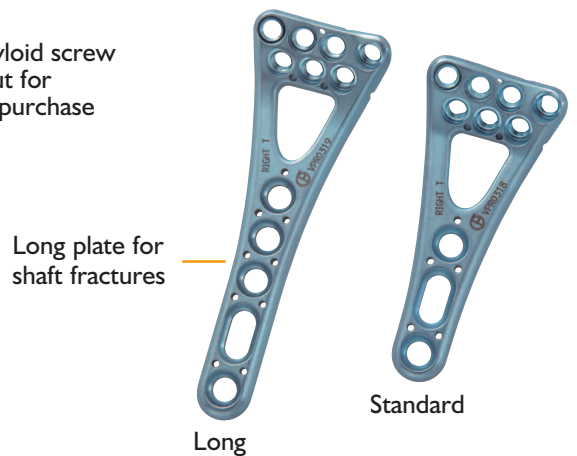


Radial styloid screw angles out for greatest purchase

Bending crease to adjust angle of the radial styloid screw

Non-Locking shaft screw placement options

Medical grade anodized titanium



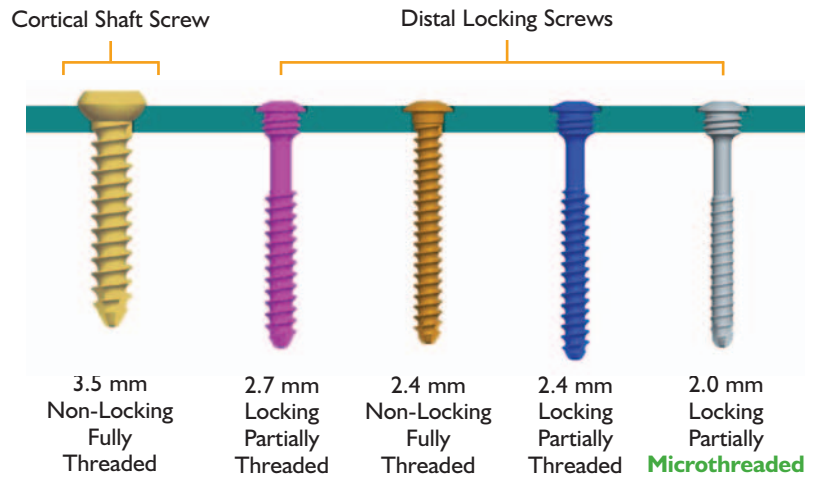
Color-coded plates
 Green = Left Plate
 Blue = Right Plate

Screws And Multiple-Function Instrumentation

Screw Technology

Anatomical accuracy of plate design and screw positions alleviates need for variable angle screws.

- Screws have wide heads for larger bearing surface and more rigidity
- Low profile screw head/plate interface minimizes tissue irritation
- Microthreaded screws provide bone fixation superior to a smooth peg design, but minimize the potential for shattering



Screw Tray Caddy

Screws color coded by characteristics

No misplaced screws - all screws have dedicated holes with matching depth.



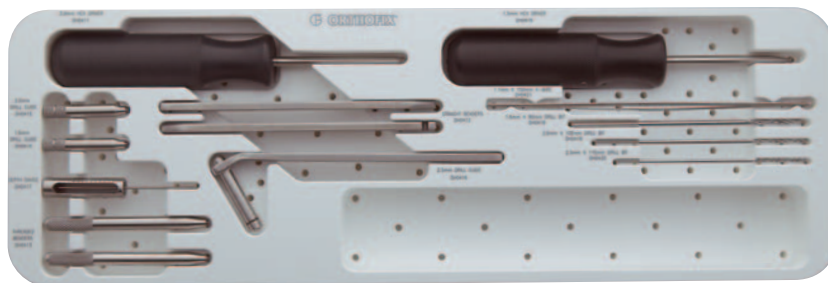
Measurement guide



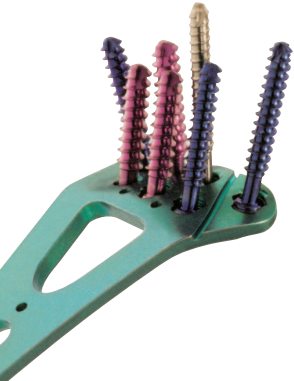
Slightly elevated seat for easy grasp

Instrument Tray Caddy

- Threaded drill guide can be used as an intra-operative handle for the plate
- Threaded benders protect the integrity of the screw hole when adjusting at the bending crease
- Ruled depth gauge for easy screw length determination



Ordering Information



3.5 mm Cortical Screws, Non Locking		
Catalog #	Thread Diameter	Screw Length
PSC3510T	3.5mm	10mm
PSC3512T	3.5mm	12mm
PSC3514T	3.5mm	14mm
PSC3516T	3.5mm	16mm
PSC3518T	3.5mm	18mm

2.4 mm, Non-Locking, Full Thread Screws		
Catalog #	Thread Diameter	Screw Length
PSC2410T	2.4mm	10mm
PSC2412T	2.4mm	12mm
PSC2414T	2.4mm	14mm
PSC2416T	2.4mm	16mm
PSC2418T	2.4mm	18mm
PSC2420T	2.4mm	20mm
PSC2422T	2.4mm	22mm

2.4 mm, Locking, Partial Thread Screws		
Catalog #	Thread Diameter	Screw Length
PSC24P12T	2.4mm	12mm
PSC24P14T	2.4mm	14mm
PSC24P16T	2.4mm	16mm
PSC24P18T	2.4mm	18mm
PSC24P20T	2.4mm	20mm
PSC24P22T	2.4mm	22mm
PSC24P24T	2.4mm	24mm



Left Plates			
Catalog #	Left	Contour	Length
VPL0305	Left	Standard	Standard
VPL0306	Left	High	Standard
VPL0307	Left	Standard	Long
VPL0308	Left	High	Long

2.7 mm, Locking, Partial Thread Screws		
Catalog #	Thread Diameter	Screw Length
PSC2714T	2.7mm	14mm
PSC2716T	2.7mm	16mm
PSC2718T	2.7mm	18mm
PSC2720T	2.7mm	20mm
PSC2722T	2.7mm	22mm
PSC2724T	2.7mm	24mm
PSC2726T	2.7mm	26mm
PSC2728T	2.7mm	28mm

2.0 mm, Locking, Partial MicroThread Screws		
Catalog #	Thread Diameter	Screw Length
PSC2012T	2.0mm	12mm
PSC2014T	2.0mm	14mm
PSC2016T	2.0mm	16mm
PSC2018T	2.0mm	18mm
PSC2020T	2.0mm	20mm
PSC2022T	2.0mm	22mm
PSC2024T	2.0mm	24mm
PSC2026T	2.0mm	26mm
PSC2028T	2.0mm	28mm

Right Plates			
Catalog #	Right	Contour	Length
VPR0317	Right	Standard	Standard
VPR0318	Right	High	Standard
VPR0319	Right	Standard	Long
VPR0320	Right	High	Long



Instruments			
Catalog #	Description		
450162	Steri-Tray, Empty		
DH0410	1.5mm Hex Driver		
DH0411	3.0mm Hex Driver		
DH0412	Bender, Straight Plate		
DH0413	Bender, Threaded Plate		
DH0414	Drill Guide, 1.6 mm		
DH0415	Drill Guide, 2.0 mm		
DH0416	Drill Guide, 2.5 mm		
DH0417	Depth Gauge	Diameter	Length
DH0418	Drill Bit, 1.6 x 90 mm	1.6 mm	90 mm
DH0419	Drill Bit, 2.0 x 100 mm	2.0 mm	100 mm
DH0420	Drill Bit, 2.5 x 110 mm	2.5 mm	110 mm
DH0421	K-Wire, 1.1 x 150 mm	1.1 mm	150 mm



www.orthofix.com

CV-0505(A)-PL-US © Orthofix Inc. 5/2005

For more information contact your local representative or call 1.800.266.3349 (BoneFix)